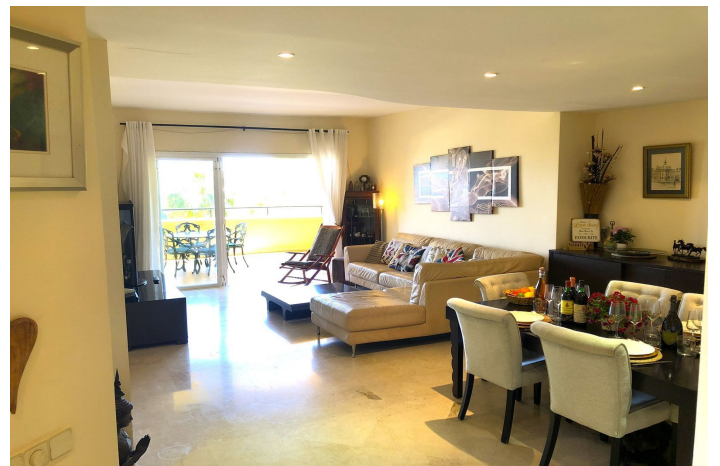


Middle Floor Apartment for sale in Elviria, Marbella

730,000 €

Reference: R4640023 Bedrooms: 3 Bathrooms: 3 Build Size: 145m² Terrace: 35m²



Costa del Sol, Elviria

Exquisite 3-bedroom, 3-bathroom en suite apartment in the prestigious *Greenlife Golf*. This first-floor gem boasts a **south-facing orientation*, ensuring a sun-drenched living experience with breathtaking views of the sea and the lush greens of the adjacent golf course.

Nestled in an *award-winning urbanization*, the residence is a mere **100 meters from a Michelin-starred restaurant, a welcoming clubhouse, a serene lake, and the **9-hole Greenlife golf course. The **Mediterranean vistas* unfold from both the south and west-facing terraces, creating the perfect backdrop for sunbathing or enjoying an al fresco BBQ.

For those who seek relaxation, two *communal pools* are conveniently located just *50 meters away, each surrounded by an ample selection of sun loungers. The apartment also includes a **private storage room, secure **underground parking*, and additional parking for guests.

Situated within a *25-minute walk to the Elviria Commercial Centre* and just *5 minutes further to the pristine beach, this property is a must-see. Golf enthusiasts will appreciate the proximity to the **par 3 course* and the *18-hole Santa Maria course, which is less than a **5-minute drive away, with four more courses within a **10-minute radius*.

Elviria, a storied and well-established community east of Marbella, is celebrated for its *superb beaches, picturesque countryside, and now, its array of **exceptional dining venues* and *top-tier amenities*. It's no wonder that this locale has become a favored destination for discerning visitors who consistently choose East Marbella and Elviria year after year.

This *Middle Floor Apartment* in Elviria, on the *Costa del Sol*, represents not just a home, but a lifestyle choice for those seeking the finest in comfort, convenience, and class.

It has an occupational licence LPO

3 Bedrooms, 3 Bathrooms, Built 145 m², Terrace 35 m².

Setting : Frontline Golf, Close To Golf, Close To Shops, Close To Sea, Close To Schools, Close To Forest, Urbanisation.

Orientation : South, West.

Pool : Communal.

Climate Control : Air Conditioning, Hot A/C, Cold A/C, Central Heating, U/F/H Bathrooms.

Views : Sea, Golf, Garden, Pool.

Features : Covered Terrace, Lift, Fitted Wardrobes, Satellite TV, WiFi, Gym, Sauna, Tennis Court, Storage Room, Utility Room, Ensuite Bathroom, Access for people with reduced mobility, Marble Flooring, Bar, Double Glazing, Restaurant On Site, Fiber Optic, Handicap access.

Furniture : Optional.

Kitchen : Fully Fitted.

Garden : Communal, Landscaped.

Security : Entry Phone, Alarm System.

Parking : Underground, Street, More Than One.

Utilities : Electricity.

Category : Golf, Holiday Homes, Resale.

Features:

Features

Covered Terrace
Lift
Satellite TV
Storage Room
Ensuite Bathroom
Marble Flooring
Double Glazing
Fitted Wardrobes
WiFi
Gym
Utility Room
Sauna
Fiber Optic
Bar
Access for people with reduced mobility
Restaurant On Site
Tennis Court

Views

Sea
Garden
Pool
Golf

Furniture

Optional

Security

Alarm System
Entry Phone

Category

Holiday Homes
Resale
Golf

Orientation

South
West

Setting

Close To Golf
Urbanisation
Close To Sea
Close To Shops
Close To Schools
Close To Forest
Frontline Golf

Kitchen

Fully Fitted

Parking

Underground
More Than One
Street

Climate Control

Air Conditioning
Cold A/C
Hot A/C
Central Heating
U/F/H Bathrooms

Pool

Communal

Garden

Communal
Landscaped

Utilities

Electricity