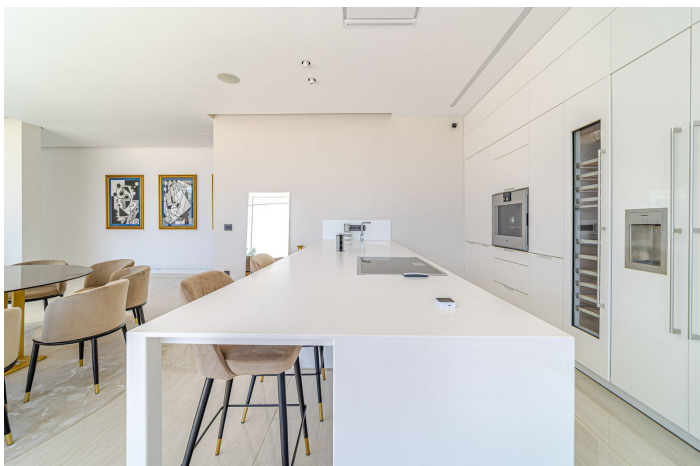
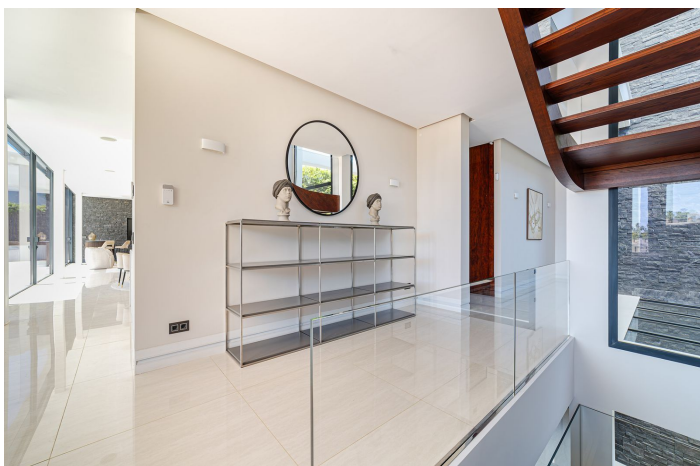
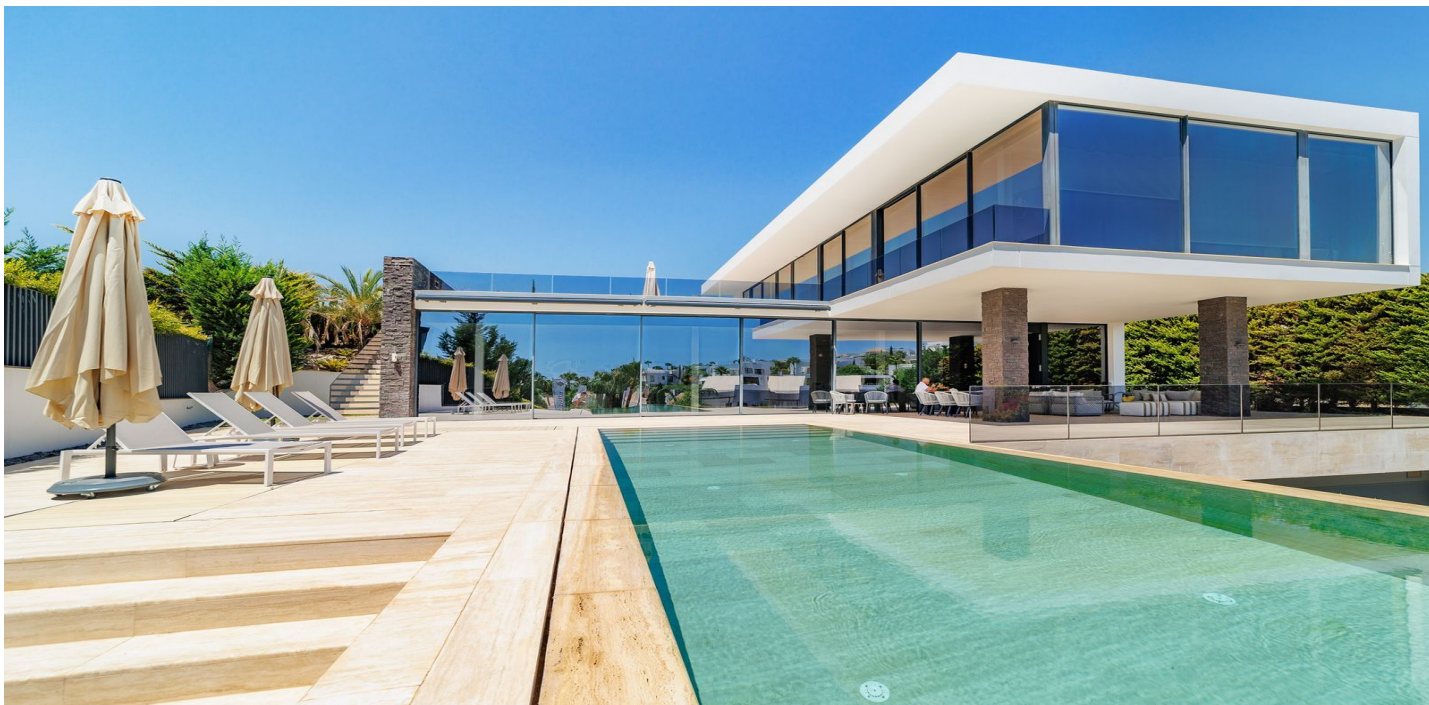




## Detached Villa for sale in Nueva Andalucía, Marbella

4,700,000 €

Reference: R4830289 Bedrooms: 6 Bathrooms: 6 Plot Size: 1,392m<sup>2</sup> Build Size: 643m<sup>2</sup> Terrace: 230m<sup>2</sup>





---

## Costa del Sol, Nueva Andalucía

Discover the epitome of luxury living in this breathtaking villa, perfectly positioned in the heart of Nueva Andalucía, one of the region's most scenic locales. Just minutes from the prestigious Los Naranjos Golf Course, Las Brisas, Aloha and an array of all the amenities, including luxury Puerto Banus. This property promises a lifestyle of convenience and elegance. Spanning an impressive 643 square meters across three levels, and set on a spacious 1,392 square meter plot, this modern, light-filled villa exemplifies sophisticated design, blending contemporary architecture with top-tier amenities. Crafted for ultimate comfort and ease, the villa boasts a state-of-the-art smart home system and an open-concept layout that seamlessly connects indoor and outdoor living spaces. On the main floor, a large living and dining area flows effortlessly into a designer kitchen, opening onto a stunning terrace and pool area—perfect for relaxation and entertaining. Two en-suite bedrooms with private terraces offer tranquil retreats, while a spacious walk-in closet and functional laundry room add to the home's convenience. Upstairs, the first floor is a sanctuary of privacy, housing three more en-suite bedrooms, each with built-in wardrobes. The master suite is a true standout, offering luxurious finishes and panoramic views of the iconic La Concha mountain range. The lower level of the home features a guest suite with its own kitchen, along with a closed garage accommodating 2-3 vehicles. For entertainment, a chic home cinema invites you to enjoy intimate movie nights in style. Meticulously maintained and offering year-round comfort, this villa is the perfect blend of luxury, style, and functionality.



## Features:

### Features

Covered Terrace  
Lift  
Near Transport  
Private Terrace  
Storage Room  
Ensuite Bathroom  
Double Glazing  
Fitted Wardrobes  
Utility Room  
Basement  
Domotics

### Views

Mountain  
Panoramic

### Pool

Private

### Garden

Private

### Category

Holiday Homes  
Investment  
Resale  
Luxury  
Golf

### Orientation

South East

### Setting

Close To Golf  
Close To Port  
Close To Shops  
Close To Town  
Close To Schools

### Furniture

Fully Furnished

### Security

24 Hour Security  
Alarm System

### Climate Control

Air Conditioning  
Hot A/C

### Condition

Excellent  
New Construction

### Kitchen

Fully Fitted

### Parking

Underground  
Garage  
Private  
Covered