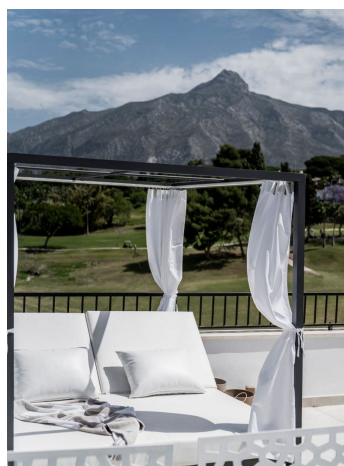
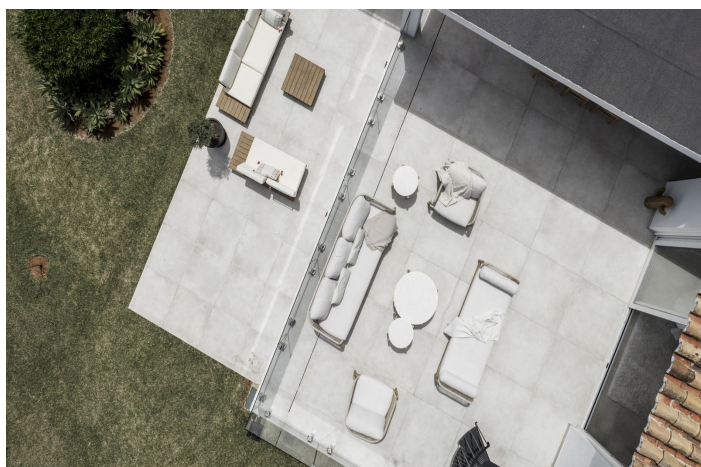


Townhouse for sale in Nueva Andalucía, Marbella

1,795,000 €

Reference: R4742290 Bedrooms: 4 Bathrooms: 4 Build Size: 217m² Terrace: 151m²



Costa del Sol, Nueva Andalucía

Experience unparalleled sophistication in this stunning townhouse located in the prestigious neighborhood of Nueva Andalucía. This remarkable residence embodies Leonardo Da Vinci's adage, "Simplicity is the ultimate sophistication," and offers a luxurious retreat designed to embrace its picturesque surroundings.

The townhouse boasts expansive outdoor areas, including a vast terrace with a covered gallery perfect for al fresco dining and barbecues overlooking the golf course. An additional terrace features a cozy living area ideal for relaxation, while a sun deck provides the perfect spot for basking in the Mediterranean sunshine.

Inside, the townhouse is characterized by its clean lines, expansive windows, and seamless integration with the natural beauty of Nueva Andalucía. The views of La Concha and the frontline of Aloha Golf are framed perfectly by the large windows. The interior design uses a neutral color palette, complemented by noble materials such as marble and wood, to create an atmosphere of understated luxury.

The open-plan layout is designed for modern living, integrating a sleek kitchen with a spacious living and dining area. This flow allows for effortless entertaining and comfortable daily living. The main house features three well-appointed bedrooms and three luxurious bathrooms, providing ample space for family and guests. In addition to the main residence, there is an exclusive guest house on the property. This private retreat includes a kitchen, living area, and bathroom, making it ideal for visitors or as a serene escape for personal use.

Residents of this exceptional townhouse also have access to a communal pool set against the backdrop of majestic mountains, offering a tranquil space for relaxation and leisure.

This townhouse in Nueva Andalucía is a masterclass in refined elegance, blending sophisticated design with the natural beauty of its surroundings. With its luxurious indoor and outdoor spaces, breathtaking views, and premium amenities, it promises an unparalleled living experience.



Features:

Features

- Covered Terrace
- Private Terrace

Setting

- Close To Golf
- Close To Shops
- Close To Town
- Close To Schools
- Frontline Golf

Furniture

- Optional

Parking

- Private

Climate Control

- Air Conditioning

Condition

- Good

Kitchen

- Fully Fitted

Views

- Golf

Pool

- Communal

Garden

- Communal