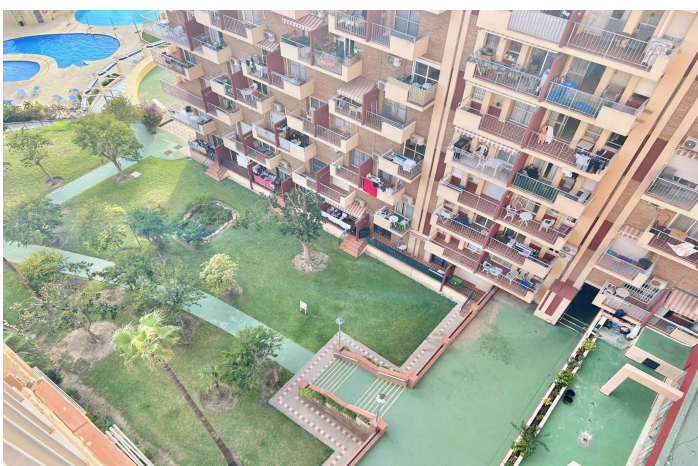


Middle Floor Apartment for sale in Benalmádena, Benalmádena

250,000 €

Reference: R4926061 Bedrooms: 1 Bathrooms: 1 Build Size: 41m² Terrace: 5m²



Costa del Sol, Benalmádena

Apartment on the Eighth Floor of Edificio Minerva, Gamonal, Benalmádena – Ideal for Living or Investment

This one-bedroom property stands out for its strategic location in one of Benalmádena's most dynamic areas, currently undergoing renovation, which enhances its medium- and long-term value. Situated on the eighth floor, the apartment offers unobstructed views and excellent natural light thanks to its orientation.

Its location makes it particularly appealing: just a short walk from the beach, close to Parque de la Paloma, and surrounded by amenities such as supermarkets, pharmacies, restaurants, and public transportation. The area also offers easy access to the highway, providing quick connections to Málaga, the airport, and other towns along the Costa del Sol.

Edificio Minerva is part of a well-established community featuring extensive common areas with gardens, a large swimming pool, and a reception service. These features make it an ideal place for both residents and tourists.

This is a secure investment opportunity with high potential as a holiday rental, thanks to the growing tourist demand on the Costa del Sol and the renewed appeal of the area. Don't miss this perfect chance to benefit from Benalmádena's booming real estate market!



Features:

Features

Lift
Near Transport
Private Terrace
24 Hour Reception
Fitted Wardrobes
WiFi
Near Church
Fiber Optic
Access for people with reduced mobility

Views

Sea
Mountain
Panoramic
Pool

Pool

Communal

Garden

Communal

Utilities

Electricity
Drinkable Water

Orientation

South West

Setting

Urbanisation
Close To Sea
Close To Shops
Close To Town
Close To Schools
Town

Furniture

Optional

Security

24 Hour Security

Category

Holiday Homes
Investment

Climate Control

Air Conditioning
Cold A/C
Hot A/C

Condition

Good

Kitchen

Fully Fitted

Parking

Street