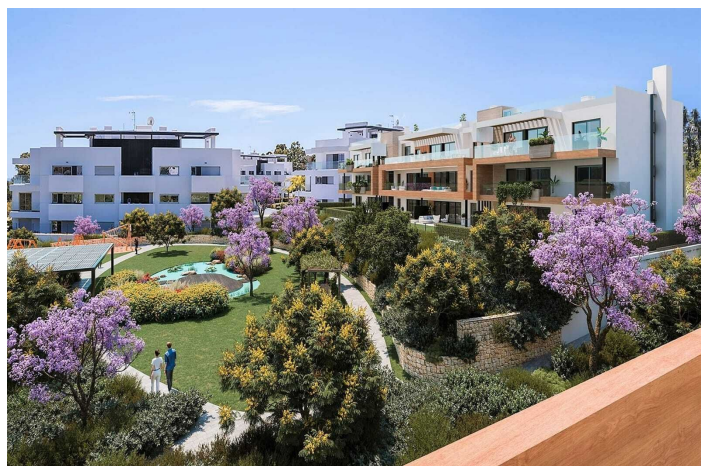




## Penthouse for sale in Atalaya, Estepona

995,000 €

Reference: R4943317 Bedrooms: 3 Bathrooms: 2 Plot Size: 104m<sup>2</sup> Build Size: 122m<sup>2</sup> Terrace: 138m<sup>2</sup>







---

## Costa del Sol, Estepona

Modern Apartment in Atalaya Emotion Residential Complex Spacious and bright 3-bedroom, 2-bathroom apartment in the prestigious Atalaya Emotion residential complex just finished in 2024. This 3-bedroom apartment in Atalaya Emotion complex is located is situated in Atalaya, on the Eastern edge of Estepona and Benahavis, 5 minutes from San Pedro Alcantara. The urbanisation is located next to the Atalaya International School with education from primary to high school; Mercadona supermarket, Atalaya Golf course, restaurants and cafeterias in the close proximity. The property is west-facing, providing beautiful natural light in the evening and a comfortable atmosphere throughout the day. This West-facing apartment consists of 3 spacious bedrooms with 2 bathrooms, walk-in wardrobes, large terrace that allows enjoying sunbathing outdoors. Communal areas include heated indoor- and outdoor- swimming pools, jacuzzi, kids swimming pool, gym, SPA and chill out areas. Uneground parking and independent storage space is included in the price of the apartment. This complex is built using latest energy-saving and ecologic technologies that will lower community and energy consumption



## Features:

### Features

Covered Terrace  
Lift  
Private Terrace  
Double Glazing  
Fitted Wardrobes  
WiFi  
Gym  
Utility Room  
Access for people with reduced mobility  
Jacuzzi  
Domotics

### Views

Mountain  
Panoramic  
Garden  
Pool

### Pool

Communal

### Garden

Communal

### Utilities

Electricity

### Orientation

West

### Setting

Urbanisation  
Close To Shops  
Close To Schools  
Close To Forest

### Furniture

Part Furnished

### Security

Gated Complex  
Alarm System  
Entry Phone  
Safe

### Category

Luxury

### Climate Control

Air Conditioning  
Pre Installed A/C  
Cold A/C  
Hot A/C

### Condition

Excellent  
New Construction

### Kitchen

Fully Fitted

### Parking

Underground