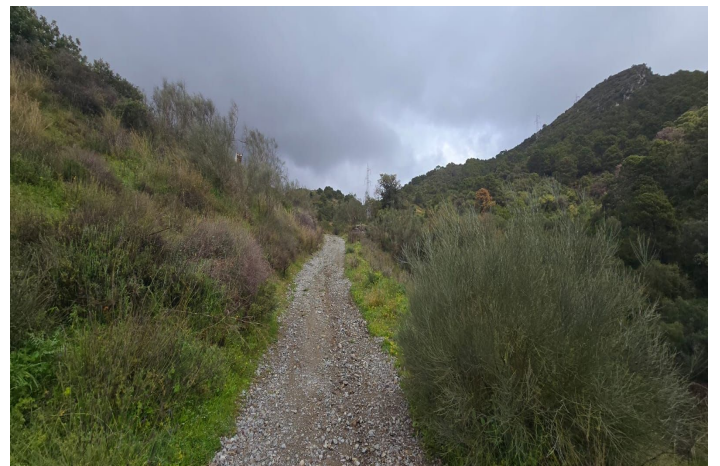




## Land for sale in Benahavís, Benahavís

3,900,000 €

Reference: R4974601 Plot Size: 26,000m<sup>2</sup>





## Costa del Sol, Benahavís

Nestled in the serene mountains of Benahavís, this exceptional rustic finca offers a unique opportunity for those looking to bring their dream building project to life. Boasting spectacular panoramic views of both the sea and the surrounding mountains, this expansive plot provides the perfect setting for a private retreat in nature.

With planning permission in place, this property is ideal for those seeking to create a bespoke home in a peaceful and tranquil environment, away from the hustle and bustle yet within easy reach of key amenities. Just a 15-minute drive from renowned golf courses and only 30 minutes from Guadalmina, this location offers the perfect blend of seclusion and accessibility.

Whether you're envisioning a luxury countryside estate or a sustainable rural retreat, this prime piece of land presents an outstanding investment opportunity in one of the most sought-after areas of the Costa del Sol.



## Features:

### Orientation

North  
East  
South  
West  
South East  
South West  
North East  
North West

### Condition

Excellent

### Views

Sea  
Mountain  
Panoramic  
Country  
Garden  
Forest

### Category

Investment  
Bargain  
With Planning Permission

### Setting

Close To Golf  
Close To Town  
Mountain Pueblo  
Country  
Close To Forest