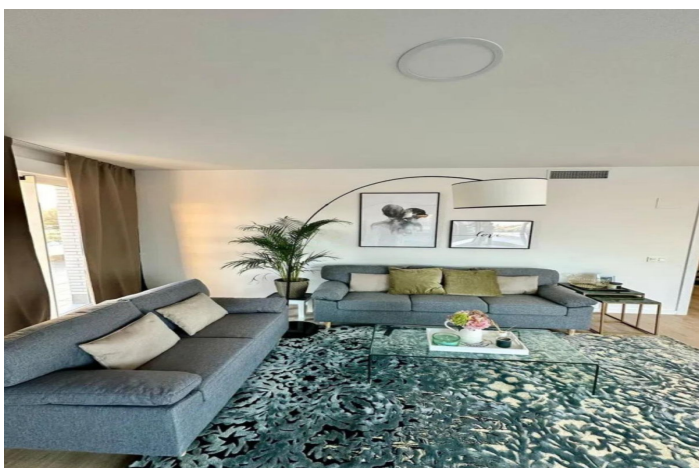
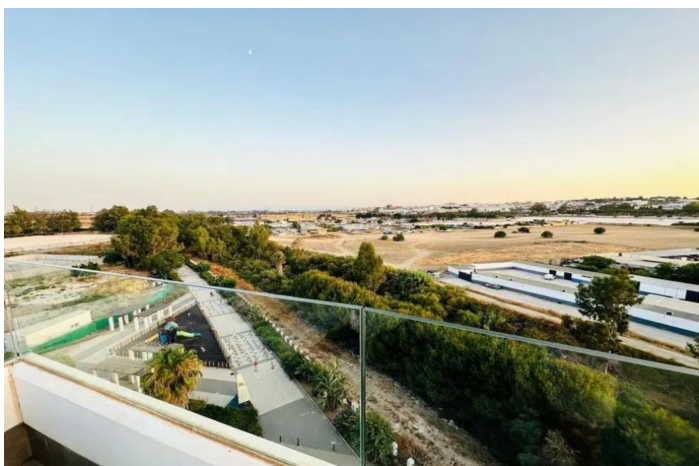
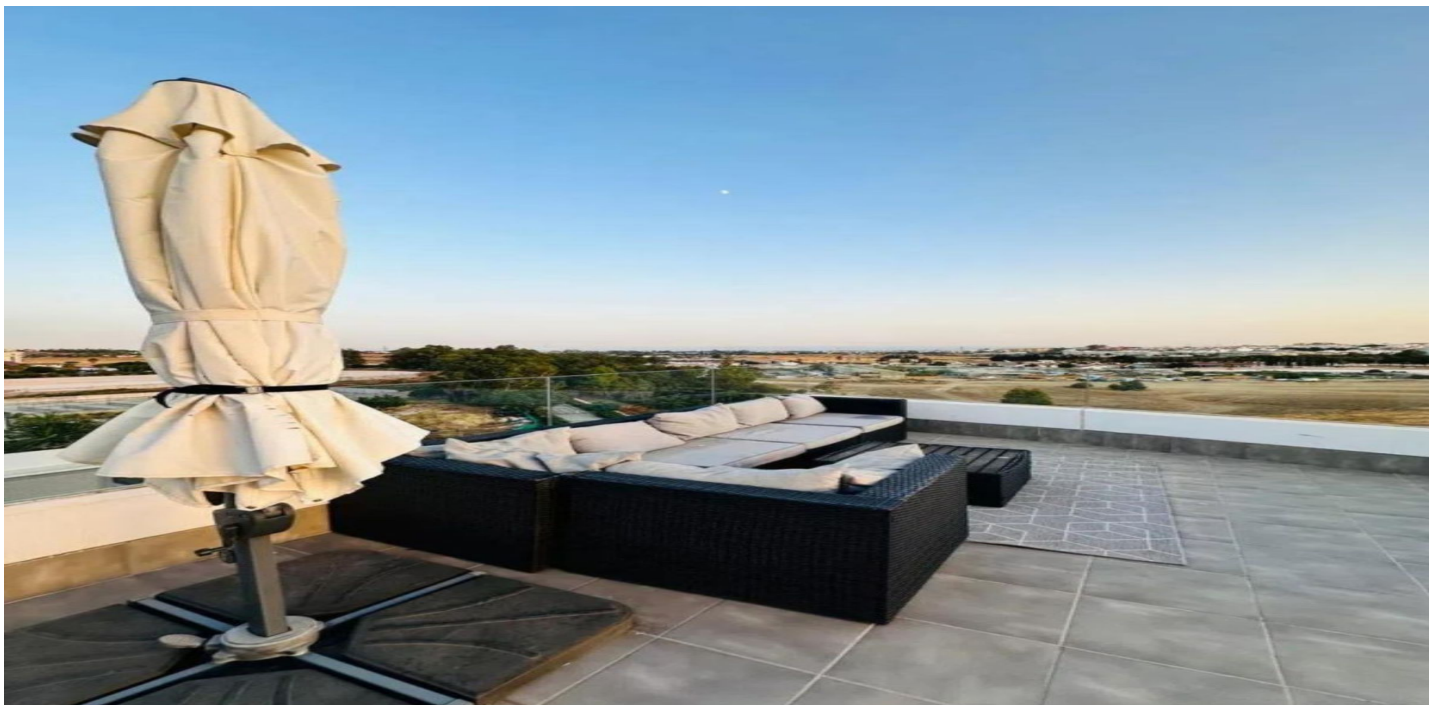




Penthouse for sale in La Campana, Marbella

620,000 €

Reference: R4991356 Bedrooms: 3 Bathrooms: 2 Build Size: 150m² Terrace: 60m²





Costa del Sol, La Campana

Fabulous dream penthouse with panoramic sea and mountain views located in Nueva Andalucía. The complex enjoys a privileged location a short distance from all services, shops, restaurants, bars, offers a tennis-paddle court, several saltwater pools, a fully equipped community hall and a magnificent gym overlooking the pool and the incredible communal gardens. This property consists of: entrance hall; spacious and bright living/dining room with access to a large corner terrace with panoramic sea and mountain views; fully furnished and equipped open-plan kitchen with laundry room; master bedroom with a bathroom and access to the terrace; two other bedrooms sharing another bathroom. It comes with a parking space and a storage room in the underground community garage. Due to its corner position and the views offered by the property, this is undoubtedly the best penthouse in the complex.", La Campana, Costa del Sol.

3 Bedrooms, 2 Bathrooms, Built 150 m², Terrace 60 m².

Setting : Commercial Area, Close To Shops, Close To Schools, Urbanisation.

Orientation : South.

Condition : Excellent.

Pool : Communal, Children`s Pool.

Climate Control : Air Conditioning, Pre Installed A/C, Hot A/C, Cold A/C.

Views : Sea, Mountain.

Features : Covered Terrace, Lift, Fitted Wardrobes, Near Transport, Private Terrace, Satellite TV, WiFi, Gym, Paddle Tennis, Storage Room, Utility Room, Ensuite Bathroom, Access for people with reduced mobility, Marble Flooring, Double Glazing, Courtesy Bus, Near Mosque, Near Church, Fiber Optic.

Furniture : Part Furnished.

Kitchen : Fully Fitted.

Garden : Communal.

Security : Gated Complex.

Parking : Underground, Garage, Covered, Private.

Category : Resale.



Features:

Features

Covered Terrace
Lift
Near Transport
Private Terrace
Satellite TV
Storage Room
Ensuite Bathroom
Marble Flooring
Double Glazing
Fitted Wardrobes
WiFi
Gym
Utility Room
Near Church
Fiber Optic
Access for people with reduced mobility
Paddle Tennis
Near Mosque
Courtesy Bus

Views

Sea
Mountain

Pool

Communal
Children`s Pool

Garden

Communal

Category

Resale

Orientation

South

Setting

Commercial Area
Urbanisation
Close To Shops
Close To Schools

Furniture

Part Furnished

Security

Gated Complex

Climate Control

Air Conditioning
Pre Installed A/C
Cold A/C
Hot A/C

Condition

Excellent

Kitchen

Fully Fitted

Parking

Underground
Garage
Private
Covered