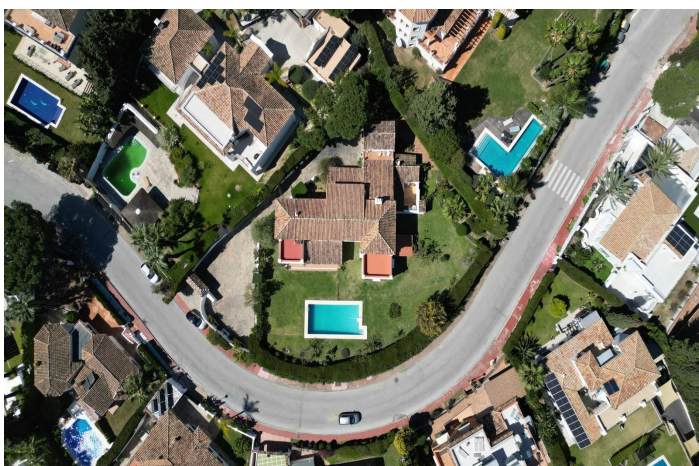
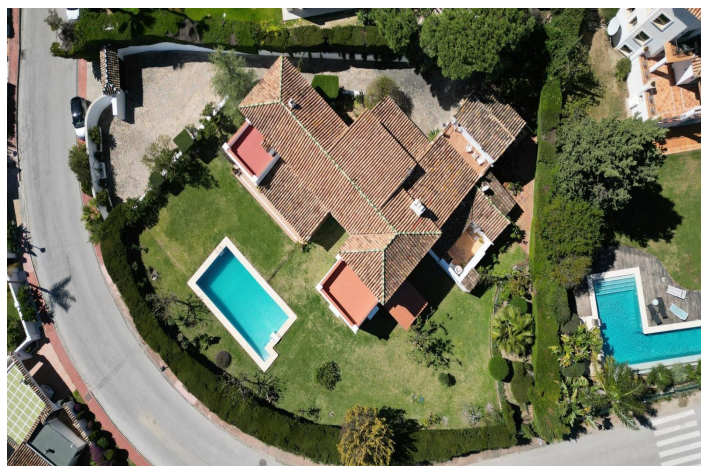




Detached Villa for sale in Nueva Andalucía, Marbella

3,150,000 €

Reference: R4993696 Bedrooms: 6 Plot Size: 1,755m² Build Size: 521m²





Costa del Sol, Nueva Andalucía

Detached Villa for Sale in Nueva Andalucía, Marbella – Prime Location with Sea Views

Located in one of Marbella's most sought-after areas, this magnificent detached villa sits on a generous corner plot of 1,755 m² in the prestigious Avenida del Generalife 28. South-southwest facing, it boasts breathtaking views of the sea and Gibraltar. The property enjoys a strategic location that offers both privacy and tranquillity, while being perfectly connected to all amenities, international schools, renowned golf courses, and the glamour of Puerto Banús.

With a total built area of 700 m² (as per the Cadaster or land registry), the villa offers generous living spaces, ideal for family life. The ground floor features a spacious living room of over 40 m², a separate dining area, a large study, guest WC, and a fully equipped kitchen with a service area including a good-sized bedroom and bathroom. The inviting covered terrace opens directly onto the beautifully maintained mature garden and private pool – the perfect setting to enjoy Marbella's enviable climate.

Upstairs, there are four further bedrooms, three of which have en-suite bathrooms. The impressive master suite includes a walk-in wardrobe and access to a large terrace with stunning panoramic views towards Gibraltar.

The property also benefits from a substantial 77 m² garage and a charming guest house arranged over two levels, with a living area downstairs and bedroom with bathroom upstairs – ideal for hosting visitors or generating rental income.

A home full of character, in excellent condition, with outstanding potential both as a permanent residence and as a high-yield buy-to-rent investment.

A unique opportunity in Nueva Andalucía. Book your viewing today and prepare to fall in love.



Features:

Features

Private Terrace
Ensuite Bathroom
Fitted Wardrobes
Guest House

Views

Sea

Pool

Private

Parking

Garage
Private
Covered

Orientation

South West

Setting

Close To Golf
Close To Port
Close To Sea
Close To Shops
Close To Schools

Kitchen

Fully Fitted

Category

Golf

Climate Control

Fireplace

Condition

Good

Garden

Private