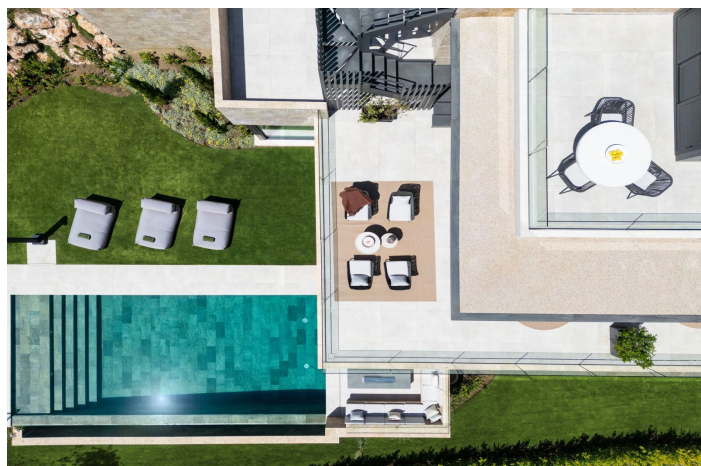
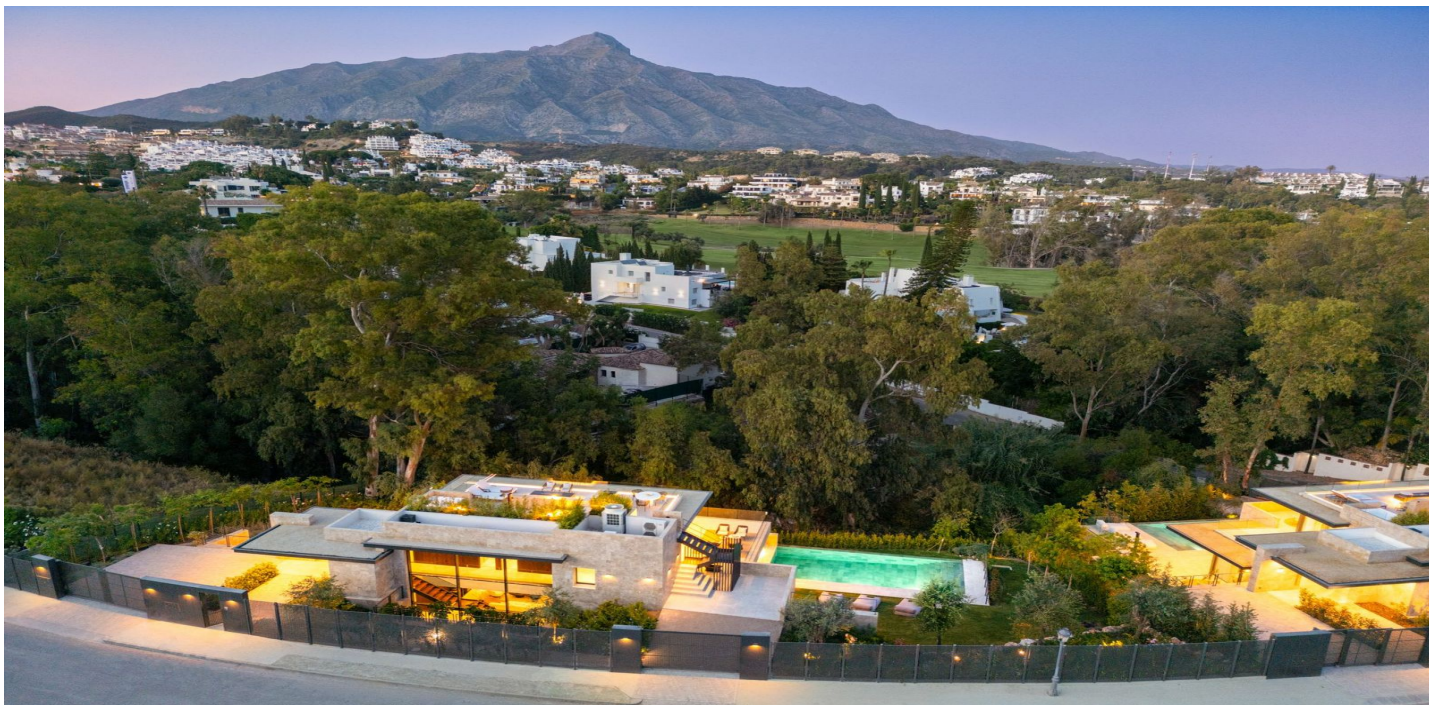




Detached Villa for sale in Nueva Andalucía, Marbella

4,375,000 €

Reference: R5026396 Bedrooms: 6 Bathrooms: 6 Plot Size: 1,200m² Build Size: 785m² Terrace: 158m²





Costa del Sol, Nueva Andalucía

This exceptional contemporary villa, recently completed, presents a perfect blend of modern luxury, elegant design, and functionality. Spanning a total built area of 785.39 m² with a generous 627.13 m² of sellable interior space, the property has been thoughtfully designed to offer both style and comfort across every level. The villa features six spacious and beautifully appointed bedrooms, each with its own en-suite bathroom, in addition to a guest toilet, ensuring maximum privacy and convenience for residents and visitors alike. The interiors are refined and sophisticated, boasting ultra-high-end finishes and attention to every detail. From custom cabinetry to designer lighting, every element reflects the highest quality. Wellness and leisure are at the heart of this home. Residents can enjoy their own private gym, a playroom ideal for families with children, as well as a luxurious wellness area complete with a sauna and steam bath — perfect for relaxing after a long day. The outdoor spaces are equally impressive. Expansive open terraces seamlessly connect the interior living areas with the lushly landscaped gardens and a beautiful private swimming pool — creating the ultimate setting for both tranquil relaxation and vibrant entertaining. The highlight of the exterior is the rooftop terrace, which features a fully equipped BBQ area and a cozy fire pit — an ideal spot for sunset dinners or gatherings under the stars. Built with sustainability in mind, the villa incorporates modern, eco-friendly design elements, making it as efficient as it is aesthetically pleasing. Located in one of the most desirable areas, this property offers not only a luxurious lifestyle but also an outstanding investment opportunity. Don't miss your chance to own this unique residence that perfectly combines elegance, comfort, and cutting-edge architecture.



Features:

Orientation

East

Climate Control

Air Conditioning

Views

Mountain

Garden

Pool

Pool

Private

Setting

Close To Shops

Close To Town

Close To Schools

Condition

Recently Renovated

Furniture

Fully Furnished

Garden

Private

Parking

Private

More Than One

Energy Rating

B

CO2 Emission Rating

B