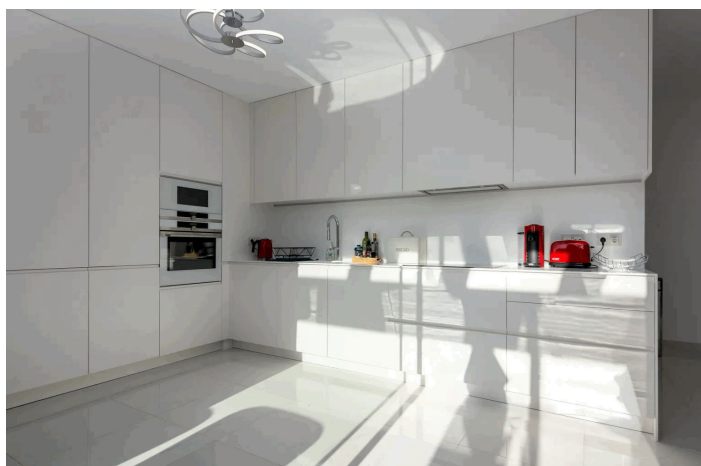




## Penthouse for sale in Estepona, Estepona

1,275,000 €

Reference: R5044249 Bedrooms: 3 Bathrooms: 2 Build Size: 134m<sup>2</sup> Terrace: 145m<sup>2</sup>





---

## Costa del Sol, Estepona

**Luxury 3-Bedroom Duplex Penthouse for Sale in Cataleya, Atalaya Golf – Panoramic Views & Resort Amenities**

Welcome to this luxury 3-bedroom duplex penthouse for sale in Cataleya, Atalaya Golf, located in one of the most prestigious gated communities in Estepona. Set within beautifully landscaped gardens and offering spectacular golf and panoramic mountain views, this modern residence blends elegance, comfort, and convenience in the heart of the Costa del Sol. Property Highlights 3 Spacious Bedrooms | 2 Bathrooms (including master en-suite) Open-plan living and dining area with direct access to a large terrace Floor-to-ceiling windows flood the home with natural light Modern fully equipped kitchen with premium appliances Private solarium and large terraces perfect for outdoor living 2 underground parking spaces + storage room This contemporary penthouse in Cataleya features high-end finishes, sleek design, and a generous floor plan ideal for both family living and entertaining. Enjoy seamless indoor-outdoor flow with moveable glass partitions that open to stunning views over the golf course and surrounding mountains. Exclusive Community Amenities 450 m<sup>2</sup> outdoor lagoon-style swimming pool with beach-entry Heated indoor pool for year-round use Over 27,000 m<sup>2</sup> of landscaped tropical gardens and green zones Secure, gated community with high privacy Walking distance to Atalaya Golf and El Paraíso Golf Clubs Prime Location in Atalaya, Estepona Perfectly situated between San Pedro de Alcántara, Benahavís, and Marbella, this penthouse offers easy access to international schools, restaurants, shops, beaches, and golf resorts – all within a 10–15 minute drive. Contact us today to schedule a private viewing of this exclusive Cataleya duplex penthouse with panoramic golf views – available now but in high demand.



## Features:

### Features

Covered Terrace  
Lift  
Near Transport  
Satellite TV  
Ensuite Bathroom  
Marble Flooring  
Fitted Wardrobes  
Solarium  
WiFi  
Gym  
Utility Room  
Fiber Optic

### Views

Mountain  
Panoramic  
Garden  
Pool  
Golf  
Pool

Communal

### Garden

Communal

### Utilities

Electricity  
Drinkable Water  
Telephone

### Orientation

South West

### Setting

Close To Port  
Close To Sea  
Close To Shops  
Close To Town  
Close To Schools

### Furniture

Optional

### Security

Gated Complex  
24 Hour Security  
Electric Blinds

### Category

Holiday Homes  
Investment  
Resale  
Luxury  
Contemporary

### Climate Control

Air Conditioning

### Condition

Excellent

### Kitchen

Kitchen-Lounge  
Partially Fitted

### Parking

Private