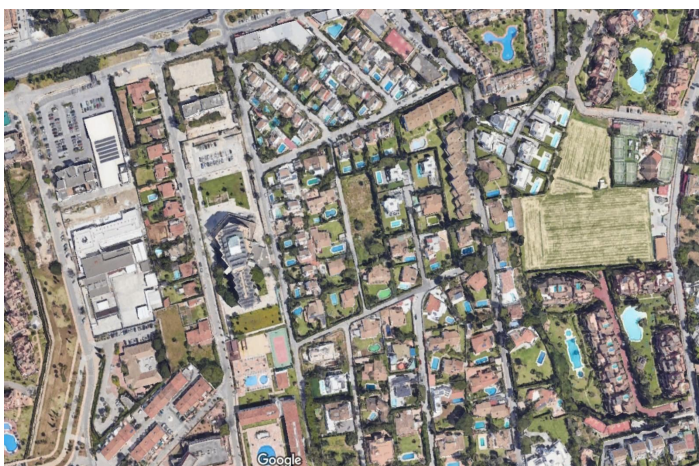
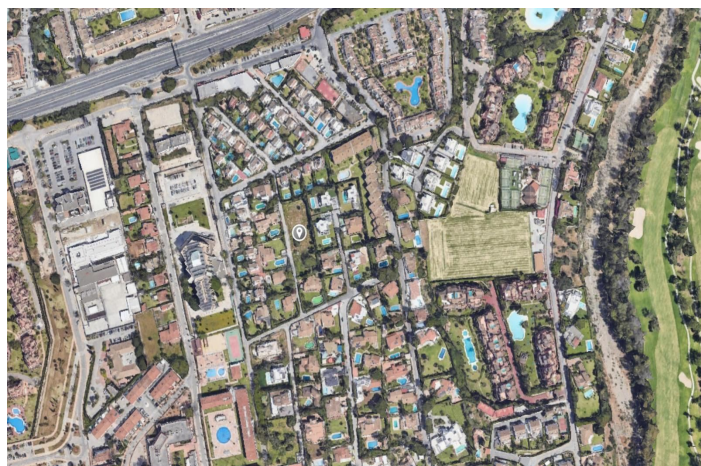




Residential Plot for sale in Atalaya, Estepona

690,000 €

Reference: R5066761 Plot Size: 864m²





Costa del Sol, Atalaya

Prime Residential Plot in Atalaya Isdabe – Ideal for Villa Project An exceptional opportunity to acquire a beautiful residential plot in the sought-after area of Atalaya, perfectly positioned near Guadalmina Baja and El Campanario. This spacious and versatile plot offers outstanding development potential, ideal for investors or individuals looking to create their dream home on the Costa del Sol. With a generous 35% buildability (edificación), the plot allows for two exciting possibilities: The construction of three semi-detached villas, perfect for a boutique development project Or the creation of a luxurious, detached single-family villa, tailored to your personal vision Set within a tranquil yet well-connected residential area, the location offers easy access to prestigious golf courses, international schools, sandy beaches, and an array of dining and shopping options. El Campanario is known for its exclusive atmosphere and proximity to amenities, making it a highly desirable address for both residents and holidaymakers. Don't miss this rare opportunity to invest in one of the Costa del Sol's most promising residential zones.



Features:

Orientation

South
West
South West

Views

Mountain
Garden
Street
Urban

Setting

Close To Golf
Close To Port
Close To Sea
Close To Shops
Close To Town
Close To Schools
Town
Close To Marina
Close To Forest

Garden

Private

Parking

Private
More Than One
Street

Category

Investment
Off Plan
With Planning Permission