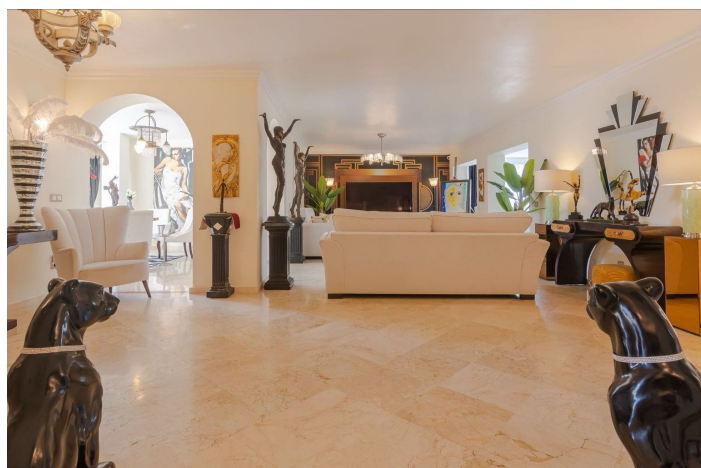
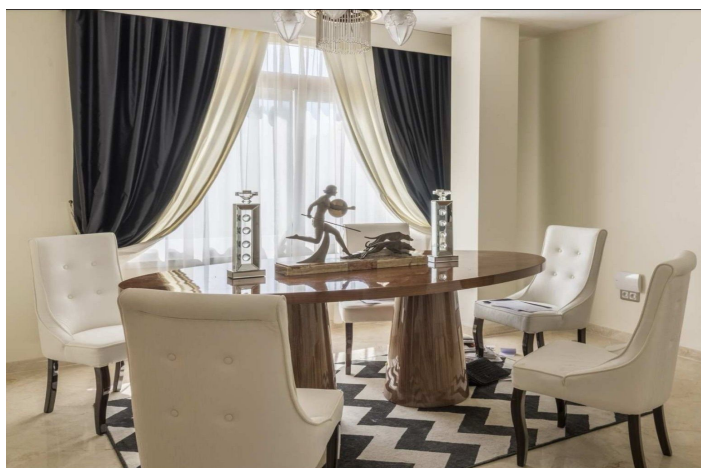




Penthouse for sale in Guadalmina Alta, Marbella

680,000 €

Reference: R5079727 Bedrooms: 3 Bathrooms: 2 Build Size: 210m² Terrace: 105m²





Costa del Sol, Guadalmina Alta

Located on the front line of the Guadalmina Alta golf course, in a quiet and sought-after area, this characterful duplex penthouse offers both space and privacy. It is part of a small, peaceful residential complex, tucked away from traffic yet within walking distance to San Pedro de Alcántara and the many restaurants and services of Guadalmina. As you enter the apartment, the sense of space is immediately noticeable thanks to its open layout. The main floor features a large living area, a separate dining room, and an additional lounge with open views over the golf course. The fully equipped kitchen matches the overall quality of the home. The master bedroom includes an en-suite bathroom, as does the second bedroom. Both are bright and comfortable. From the dining area, a staircase leads to the upper level, where there's an additional conservatory-style bedroom with a jacuzzi and direct access to a large 65 m² solarium. This rooftop space includes a private plunge pool and enjoys excellent views. One of the key advantages of this property is that the upper floor has its own private access via the elevator, making it easy to convert into a fully independent apartment if desired. The sale price includes an underground parking space, and a storage room. Recently reduced from €895,000 to €680,000, this penthouse offers excellent value for money—particularly given its size, location, and the potential to divide it into two separate units.



Features:

Features

Lift

Storage Room

Marble Flooring

Double Glazing

Fitted Wardrobes

Solarium

Jacuzzi

Views

Golf

Pool

Communal

Garden

Communal

Category

Golf

Orientation

South West

Setting

Close To Golf

Close To Shops

Frontline Golf

Furniture

Not Furnished

Security

Gated Complex

Climate Control

Air Conditioning

Fireplace

Condition

Good

Kitchen

Partially Fitted

Parking

Private