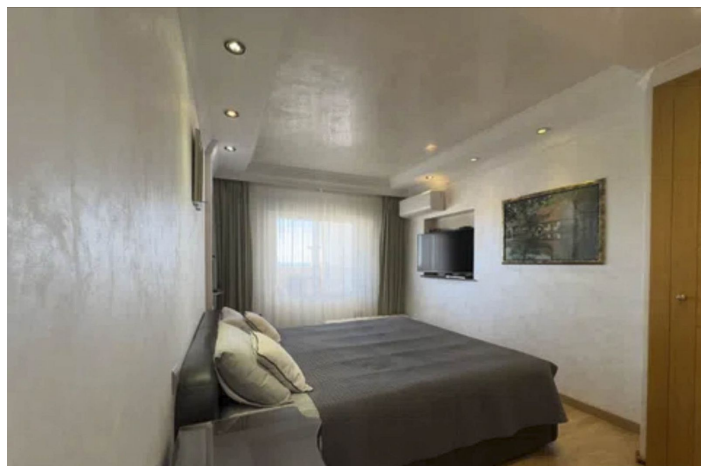




## Penthouse for sale in Atalaya, Estepona

403,000 €

Reference: R5112346 Bedrooms: 2 Bathrooms: 1 Build Size: 86m<sup>2</sup> Terrace: 10m<sup>2</sup>





## Costa del Sol, Atalaya

Penthouse with Sea Views – Atalaya, Estepona This exclusive 2-bedroom, 2-bathroom penthouse apartment, with 110 m<sup>2</sup> of built area and a 25 m<sup>2</sup> terrace, is located in a private development in Atalaya, close to golf courses, shops, schools, and just minutes from the sea. Ideal as a permanent residence, second home, or luxury investment. The home offers a bright living room with access to the large private terrace and solarium, perfect for enjoying views of the sea, mountains, gardens, and communal pool. The open-plan kitchen is fully equipped, and the bedrooms have built-in wardrobes and central heating. The development has a communal pool, well-kept gardens, security with an intercom and gated community, as well as an elevator and a private covered parking space. It includes a storage room, laundry room, and double glazing for added comfort. Strategic Location: • Close to golf courses, shops, and schools • Just minutes from the sea and the center of Estepona • Easy access to Marbella, Sotogrande, and Gibraltar Highlights: • Southwest-facing, with natural light all day • Private terrace and solarium with panoramic views • Partially renovated and ready to move into • Optionally furnished, ideal for investment or vacations A unique opportunity to live in a luxury penthouse on the Costa del Sol, combining comfort, security, and exceptional views.



## Features:

### Features

Lift  
Near Transport  
Private Terrace  
Satellite TV  
Storage Room  
Ensuite Bathroom  
Marble Flooring  
Double Glazing  
Fitted Wardrobes  
Solarium  
WiFi  
Utility Room  
Barbeque  
Fiber Optic  
Tennis Court  
Wood Flooring  
Paddle Tennis

### Views

Sea  
Mountain  
Panoramic  
Garden  
Pool  
Courtyard  
Urban  
Golf

### Pool

Communal  
Heated

### Garden

Communal

### Utilities

Electricity  
Drinkable Water  
Telephone

### Orientation

South

### Setting

Commercial Area  
Close To Golf  
Urbanisation  
Close To Sea  
Close To Shops  
Close To Town  
Close To Schools  
Frontline Golf

### Furniture

Fully Furnished  
Optional

### Security

Gated Complex  
Alarm System  
Electric Blinds  
Entry Phone

### Category

Investment  
Resale  
Golf

### Climate Control

Air Conditioning  
Cold A/C  
Hot A/C

### Condition

Good  
Excellent

### Kitchen

Fully Fitted

### Parking

Street  
Communal