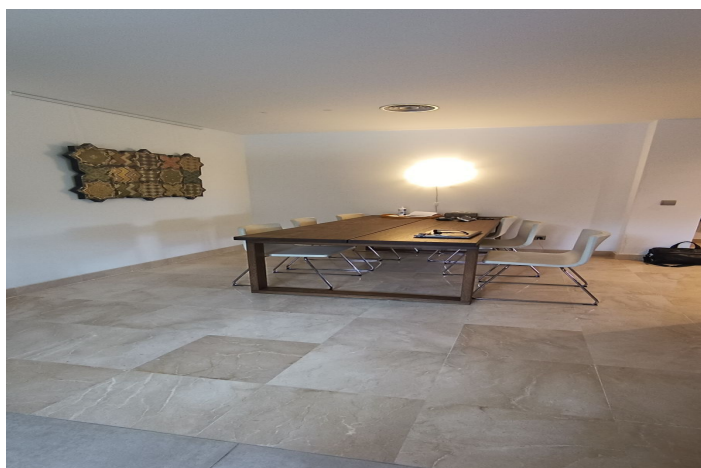




## Ground Floor Apartment for sale in La Mairena, Marbella

**415,000 €**

Reference: R5139883 Bedrooms: 3 Bathrooms: 2 Plot Size: 18m<sup>2</sup> Build Size: 103m<sup>2</sup> Terrace: 31m<sup>2</sup>





---

## Costa del Sol, La Mairena

Beautiful 3 bedrooms and 2 bedroom groundfloor apartment in the hills above Elviria, La Mairena! This sunny sea view garden apartment located in the east of Marbella, offers a great south / west facing orientation with a private garden and guarantees sunshine specially in wintertime ; the apartment has approx 103 m2 built plus 31 m2 terrace and the private garden part in front of the terrace; the wonderful terrace has crystal curtains and is an excellent extension of the living room, the crystal curtains can be opened and closedt totally, the views of the apartment and the garden / terrace part are wonderful towards the sea. The apartment is located in a quiet, exclusive residential area which is also close to all amenities! This modern residential complex "la Floresta " is located just a few minutes (about 8 minute drive) from the beach in Elviria. The golf club "El Soto Golf" offers gym, tennis court, 9 hole golf course, paddle tennis court, clubhouse with restaurant etc, to reach the clubhouse is only 2minutes by car or 12 minute walk from the gated community. The residential complex is characterized by its great view of the nature reserve and the sea, the beautiful tranquillity and nature - and it is only a few minutes (about 7 km, 8 minutes) from the commercial center / supermarket etc located in Elviria. In La Mairena there are several restaurants, a bar, a mini supermarket, the tennis center Hofsäss and the German school, furthermore many other golf courses (for example, Santa Maria Golf, La Cala Golf, El Lago Golf etc) can be reached in just a few minutes. To the city center of Marbella you only need about 18-20 minutes in car.



## Features:

### Features

Covered Terrace  
Lift  
Near Transport  
Private Terrace  
Ensuite Bathroom  
Marble Flooring  
Double Glazing  
Fitted Wardrobes  
WiFi  
Gym  
Sauna  
Tennis Court  
Paddle Tennis

### Views

Sea  
Panoramic  
Garden

### Pool

Communal

### Garden

Private

### Utilities

Electricity

### Orientation

South  
South West

### Setting

Close To Golf  
Urbanisation  
Close To Town  
Close To Schools  
Close To Forest  
Frontline Golf

### Furniture

Part Furnished

### Security

Gated Complex  
24 Hour Security

### Category

Investment  
Resale

### Climate Control

Air Conditioning  
Cold A/C  
Hot A/C

### Condition

Excellent

### Kitchen

Fully Fitted

### Parking

Private