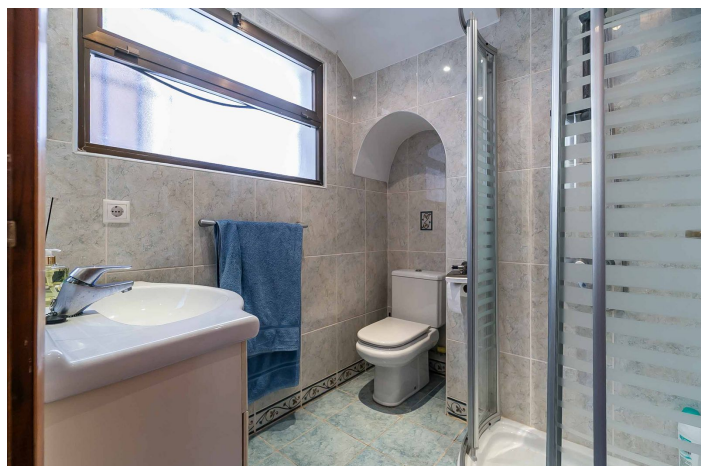
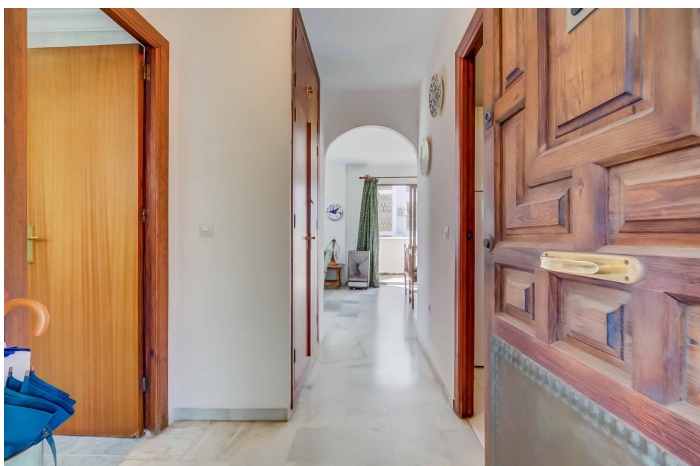




## Penthouse Duplex for sale in Fuengirola, Fuengirola

395,000 €

Reference: R5223280 Bedrooms: 2 Bathrooms: 2 Build Size: 101m<sup>2</sup>





---

## Costa del Sol, Fuengirola

Corner duplex for sale in the prestigious Puebla Lucía urbanisation, located in the heart of Fuengirola. With an unbeatable location, this exclusive community stands out for its tranquillity, Andalusian charm, and proximity to all services. The property has 101 m<sup>2</sup> distributed over two floors. It features two spacious double bedrooms with fitted wardrobes and two full bathrooms. The kitchen is independent, providing both functionality and privacy. Upstairs, there is a separate laundry room, ideal as a utility and storage space. Thanks to its southeast orientation, the duplex enjoys plenty of natural light throughout the day. Being a corner unit, it offers greater privacy and an airy atmosphere. The stairs connecting both floors are wide and framed by high ceilings, creating a spacious and bright atmosphere. One of the main highlights is the large L-shaped terrace, perfect for enjoying the sun and peaceful surroundings. The urbanisation offers a lift, a beautiful communal swimming pool surrounded by gardens, and community parking for residents. Puebla Lucía is a gated, well-maintained, and secure complex, just a few minutes' walk from the beach, train station, supermarkets, schools, parks, health centre, shops and restaurants. A unique opportunity to live in one of the most sought-after areas of Fuengirola – ideal as a permanent residence or investment. Our agent fees are included in the sale price. The price does not include costs associated with the purchase, such as notary, registration, and taxes related to the transfer (ITP, VAT, AJD). Furniture is not included in the price.



Features:

Features

Lift  
Near Transport  
Private Terrace  
Fitted Wardrobes  
Utility Room

Setting

Commercial Area  
Close To Port  
Urbanisation  
Close To Sea  
Close To Shops  
Close To Schools  
Town

Garden

Communal

Orientation

South East

Condition

Good

Parking

Communal

Views

Street  
Urban

Pool

Communal