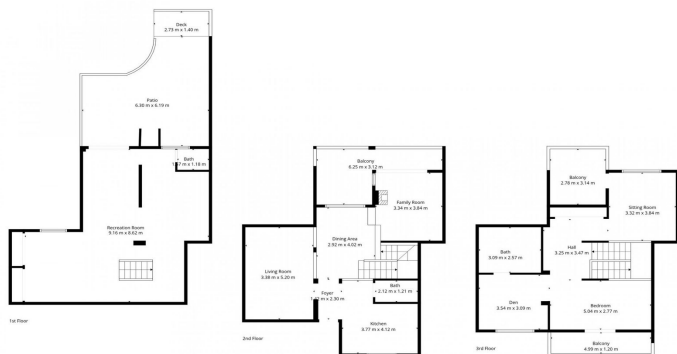




Townhouse for sale in Monda, Monda

349,000 €

Reference: R5248144 Bedrooms: 3 Bathrooms: 2 Build Size: 237m² Terrace: 32m²


TOTAL: 194 m²
1st floor: 64 m², 2nd floor: 66 m², 3rd floor: 64 m²
EXCLUDED AREAS: PATIO: 33 m², DECK: 4 m², BALCONY: 28 m², WALLS: 16 m²

Floor Plan Created By Colliers App. Measurements Derived Highly Reliable But Not Guaranteed.





Sierra de las Nieves, Monda

Upon entering, you'll find a split-level living and dining area with a cozy fireplace, a fully fitted kitchen, and a guest toilet. From the living room, you have direct access to a lovely terrace with beautiful views—perfect for enjoying morning coffee or evening sunsets. Originally, the area by the entrance served as a private garage, but it now functions as a showroom/lounge. This versatile space could easily be transformed into an additional bedroom, a home office, or a snug TV room. The current owner has thoughtfully redesigned the entrance level to create an open, light-filled layout that allows natural brightness to flow throughout the home. Upstairs, the property features an exceptionally large master suite that could be reconfigured into up to three bedrooms simply by adding room dividers. A second bathroom could also be installed if desired. This level offers two inviting terraces—one for sun, one for shade—both with pleasant views of the surrounding landscape. A standout feature of this townhouse is the expansive semi-basement, currently used as a creative studio. The possibilities here are endless: a hobby or craft room, dance studio, private guest quarters, cinema room, or a spacious home office. From this level, you enjoy access to a generous garden patio, ideal for entertaining, outdoor dining, and BBQ gatherings. The house forms part of a well-kept community with a friendly international atmosphere, offering a welcoming environment to residents of all backgrounds. This townhouse is an excellent choice for those seeking a peaceful retreat with authentic Andalusian charm, yet within walking distance to Monda's amenities and just a short drive from Marbella and the coast. Perfect as a permanent residence, holiday home, or investment opportunity.



Features:

Features

Near Transport
Private Terrace
Fitted Wardrobes
Basement

Views

Mountain
Panoramic
Country
Garden

Garden

Communal

Orientation

South

Setting

Close To Shops
Close To Town
Close To Schools

Parking

Private

Climate Control

Air Conditioning
Fireplace

Furniture

Optional

Utilities

Electricity