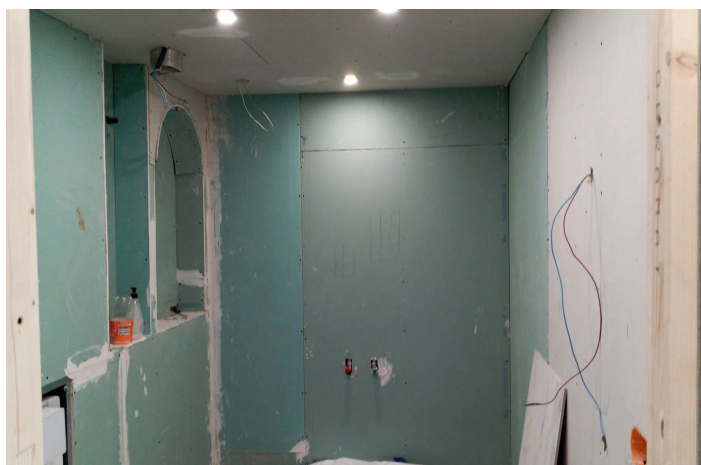
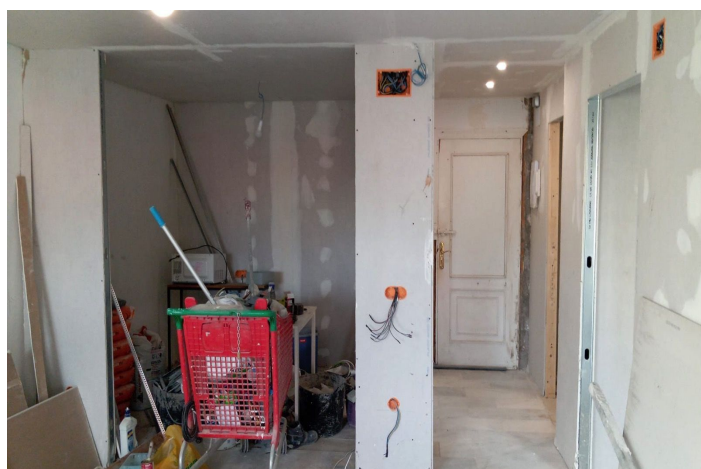




## Middle Floor Apartment for sale in Puerto Banús, Marbella

520,000 €

Reference: R5296324 Bedrooms: 2 Bathrooms: 1 Build Size: 79m<sup>2</sup>





---

## Costa del Sol, Puerto Banús

Prime Apartment in the Heart of Puerto Banús, Marbella – Frontline Beach Location with Endless Potential! Seize this exceptional opportunity to own a 79 m<sup>2</sup> apartment in the glamorous epicentre of Puerto Banús, Marbella's iconic luxury marina on the Costa del Sol – renowned for its opulent yachts, supercars, and celebrity sightings. Steps from the golden sands of Playa de Levante and Playa del Duque, this frontline beach property immerses you in a vibrant lifestyle surrounded by high-end designer boutiques (Louis Vuitton, Gucci, Dolce & Gabbana), upscale shopping centres like Marina Banus and El Corte Inglés, Michelin-starred restaurants, trendy beach clubs, and pulsating nightlife. Perfectly positioned along the famous Golden Mile, it's just a short stroll to gourmet dining, exclusive lounges, and the marina's jet-set atmosphere, with easy access to Marbella's Old Town, world-class golf courses, and attractions like the Fly Blue Catamaran rides. Currently undergoing reforms, this second-hand gem on the second floor (with lift) offers two bedrooms, one bathroom, a kitchen, living room, and a charming small balcony overlooking the bustling main street of Banús – ideal for people-watching in this affluent hotspot. North-facing for cooler, comfortable living, it presents a blank canvas to finish to your personal taste, blending modern luxury with the area's Andalusian charm. Priced at €520,000 – a rare chance to invest in Puerto Banús' high-demand market, whether as a holiday retreat, permanent residence, or lucrative rental property.



## Features:

### Features

Lift  
Near Transport  
Marble Flooring  
Double Glazing  
Near Church  
Access for people with reduced mobility

### Views

Garden  
Courtyard  
Street  
Urban

### Orientation

North

### Climate Control

Pre Installed A/C

### Setting

Commercial Area  
Beachside  
Close To Port  
Close To Sea  
Close To Shops  
Close To Town  
Close To Schools  
Town  
Close To Marina  
Beachfront  
Front Line Beach Complex  
Marina  
Port

### Kitchen

Not Fitted

### Condition

Renovation Required

### Furniture

Not Furnished

### Category

Beachfront

### Parking

Street