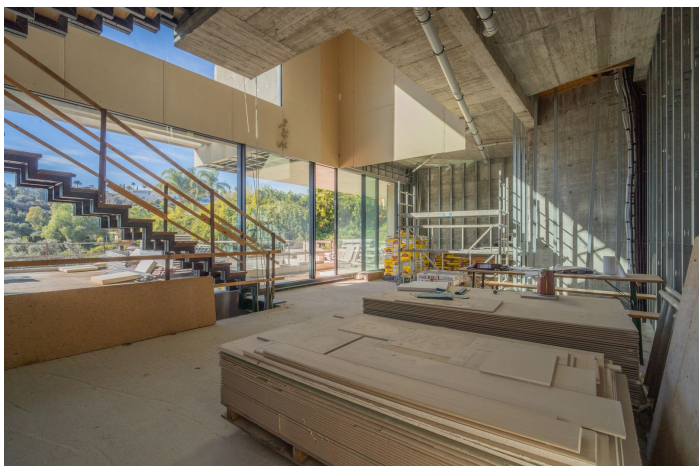




## Detached Villa for sale in Benahavís, Benahavís

2,940,000 €

Reference: R5305513 Bedrooms: 5 Bathrooms: 5 Plot Size: 1,350m<sup>2</sup> Build Size: 414m<sup>2</sup> Terrace: 356m<sup>2</sup>







---

## Costa del Sol, Benahavís

Exceptional opportunity to acquire a new-build luxury villa project already under construction, located on an elevated south-west facing plot in the prestigious residential area of La Alquería, Benahavís.

The 1,350 m<sup>2</sup> plot enjoys a privileged raised position, offering open sea and golf views, excellent sunlight throughout the day and long-term value in one of the most sought-after villa zones on the Costa del Sol.

The project comes with an approved building license for a contemporary 5-bedroom, 5-bathroom villa, distributed over three levels, designed with clean architectural lines and a strong focus on precision and quality:

- 414 m<sup>2</sup> interior built area
- 356.98 m<sup>2</sup> terraces
- 81 m<sup>2</sup> private swimming pool
- 200 m<sup>2</sup> panoramic rooftop terrace

Construction is already approximately 65% completed, executed with exceptional accuracy and craftsmanship.

The concrete structure has been built extremely linear and precise, reflecting high construction standards from the very foundation.

The villa features Sky-Frame floor-to-ceiling sliding doors, ensuring seamless indoor-outdoor living, maximum natural light and uninterrupted views.

Located where Marbella, Estepona and Benahavís meet, La Alquería is one of the fastest-developing luxury residential areas, surrounded by golf courses, nature and exclusive villas.

Just minutes from Puerto Banús, international schools, beaches and amenities, this property represents a rare turnkey-in-progress opportunity, ideal both as a dream home and a high-end investment.

License. Construction in progress. Premium quality. Prime location.

A truly outstanding opportunity in one of Marbella's most promising luxury areas.



## Features:

### Features

Lift  
Near Transport  
Solarium

### Orientation

South West

### Views

Sea  
Panoramic  
Pool  
Golf

### Setting

Close To Golf  
Close To Shops  
Close To Town

### Condition

Excellent

### Pool

Private

### Garden

Private

### Parking

Covered

### Category

Investment  
Luxury  
Golf