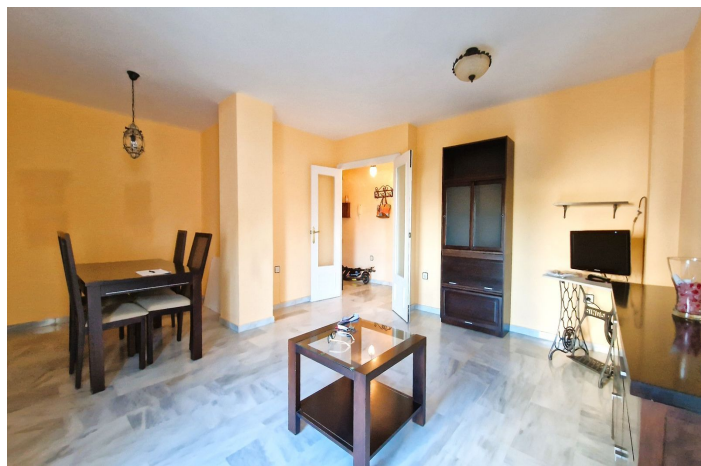
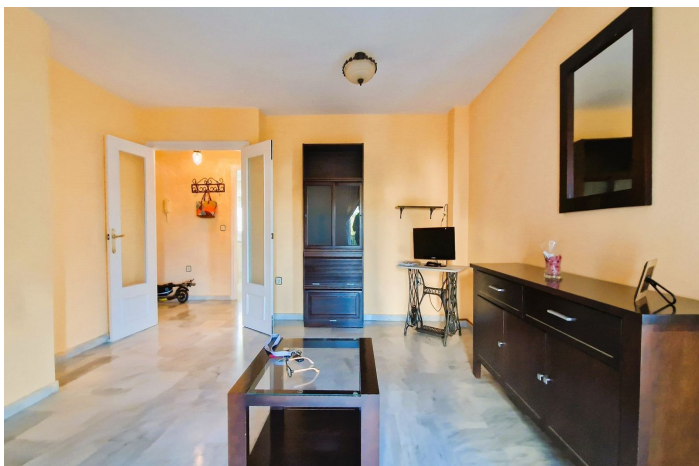




Penthouse Duplex for sale in Diana Park, Estepona

249,900 €

Reference: R4650271 Bedrooms: 2 Bathrooms: 2 Build Size: 120m² Terrace: 37m²





Costa del Sol, Atalaya

Located in the urbanization of Atalaya del Golf, this duplex penthouse offers exceptional potential to become a unique and personalized home. Its strategic location close to the beach and San Pedro de Alcantara makes it a priceless opportunity.

Upon entering the apartment, you are greeted by a spacious and bright living-dining room, providing a cozy and versatile space to relax and enjoy gatherings with family or friends. The separate kitchen, although in need of renovation, offers a functional design and the ability to create a modern, custom-equipped space.

The main floor houses two generous bedrooms and two full bathrooms, one of which is integrated into the master bedroom, providing additional privacy and comfort. The current layout can be adjusted to maximize space and accommodate individual needs.

In addition, a lovely small terrace is located on this floor which, although modest in size, provides an outdoor space to enjoy the breeze and surrounding views.

The real attraction of this duplex penthouse is found on the top floor, where a large solarium is located. This area offers a blank canvas for creativity and customization. With panoramic views and a tranquil setting, the solarium is the perfect place to create an outdoor oasis. The possibility of installing an outdoor kitchen along with a barbecue area and pergola here would provide an idyllic space to enjoy the outdoors, relax or entertain guests while enjoying the region's sunny climate.

In summary, this duplex penthouse, although in need of renovation, offers great potential to become a spectacular home in a prime location. The combination of the top floor, the solarium and the possibility of creating an outdoor kitchen with barbecue area and pergola on the terrace make it a unique opportunity in Atalaya del Golf.



Features:

Features

Near Transport
Private Terrace
Marble Flooring
Fitted Wardrobes
WiFi

Views

Mountain
Urban

Pool

Communal

Garden

Communal

Utilities

Electricity
Drinkable Water

Orientation

West

Setting

Commercial Area
Urbanisation
Close To Sea
Close To Town
Suburban

Furniture

Part Furnished

Security

Gated Complex

Category

Holiday Homes
Cheap

Climate Control

Air Conditioning

Condition

Renovation Required
Fair

Kitchen

Fully Fitted

Parking

Street
Communal